







Informational text on a dark panel, partially visible on the right edge of the image.



Portrait of a woman, likely a religious figure, wearing a dark, heavy garment with a white lace collar and cuffs. The painting is set within a dark, ornate wooden frame.













# Lo scavo archeologico

## Il santuario romano

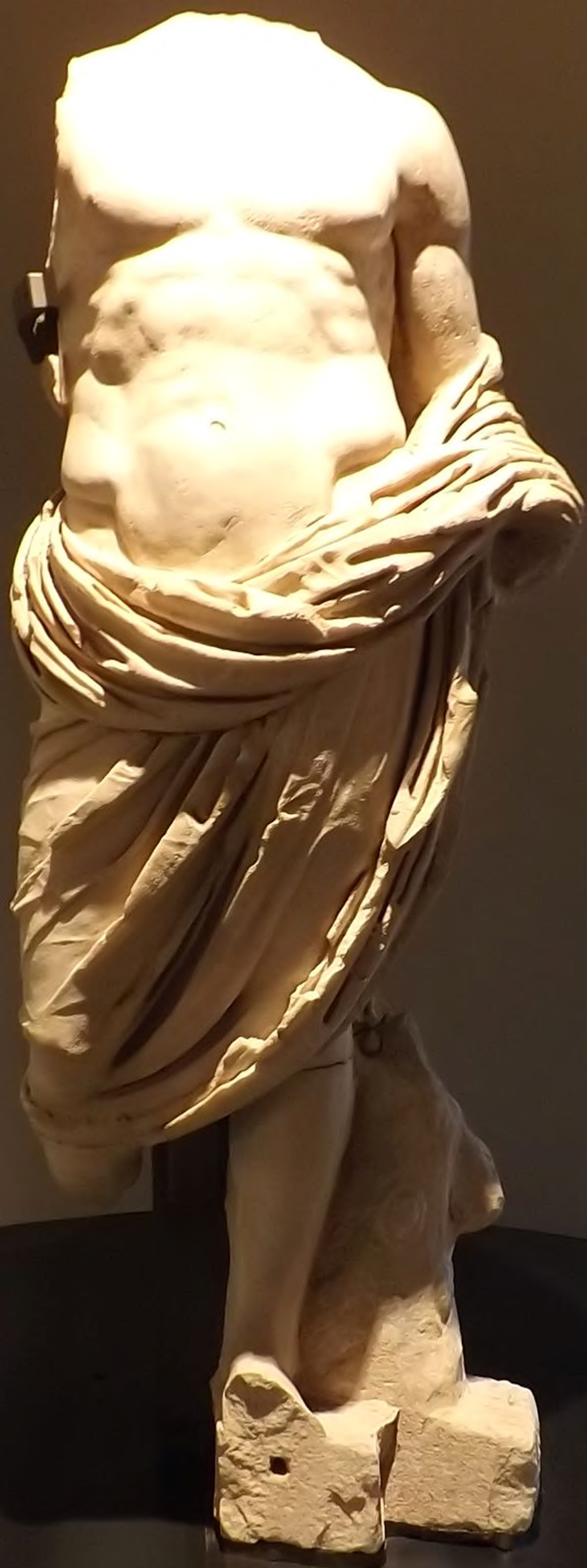
### I rituali

### Minerva



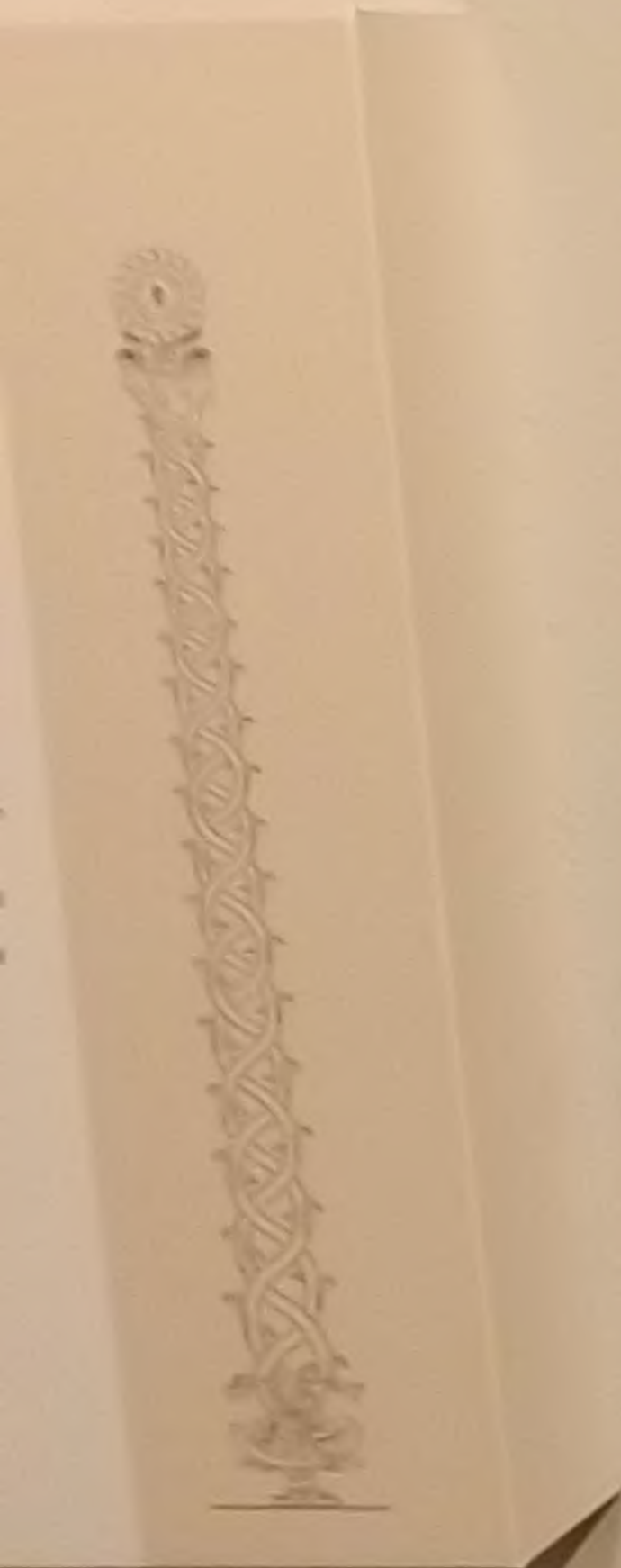








Small white marble fragment or detail of the main statue, possibly a head or a small figure, displayed on a stand.





Vertical text label on the wall to the left of the painting.

La città dei morti - City of the dead

Main text panel on the right wall, containing several columns of text.

2

3

